

HARMONY HEART CAMP

a ministry of World Impact, Inc.



GUEST GROUP HANDBOOK

1285 Heart Lake Road

Jermyn, PA 18433

Tel: (570) 254-6272

Fax: (570) 254-6263

E-mail: harmonyheart@worldimpact.org

www.harmonyheartcamp.org



HARMONY HEART CAMP

A Ministry of World Impact

*“Come to Me, all you who labor and are heavy laden,
and I will give you rest.” Matthew 11:28*

Dear Guest,

Our mission is to honor and glorify God and delight in Him in a camp and retreat center where all — and especially those from the inner city — may experience the presence of God.

Prior to the camp’s beginning in 1945, the founding pastors of Harmony Heart spent much time in prayer. Prayer remains a central focus. Each guest group is prayed for daily before it arrives and, on the day of arrival, the staff walk throughout the buildings and grounds bathing the camp in prayer.

Jesus said, “Come to me, all who labor and are heavy laden, and I will give you rest.” (Matthew 11:28) It is our prayer that our guests may experience restoration, refreshment and renewal in Christ as they leave behind their normal routines and spend time here in worship, prayer, fellowship and play.

In the Love of Christ,

The Harmony Heart Camp Staff

Contents

- 1 Welcome
- 2 Recreation Activities
- 3 Meeting and Dining Facilities
- 4 Camp Rules
- 5 Snow Tubing Guidelines
- 6 Site Map
- 7 Room Accommodations and Layouts
- 9 Statement of Faith
- 11 Emergency Medical Care
- 12 Driving Directions

Visit our web site for photographs,
a closer look at our ministry
and accommodations:
www.harmonyheartcamp.org



1285 HEART LAKE ROAD, JERMYN, PA 18433
Phone (570)254-6272 Fax (570)254-6263

Recreation Activities

SUMMER

- ◆Swimming in Heart Lake
- ◆250' waterslide
- ◆Boating: row boats, paddle boats and canoes
- ◆Hiking trail
- ◆Cookouts
- ◆Fishing (PA license required for those over 15 years old)
- ◆Tetherball
- ◆Snack shop
- ◆Softball (bring your own gloves)
- ◆Soccer
- ◆Basketball
- ◆Volleyball (indoor & outdoor)
- ◆Swings
- ◆Archery
- ◆Hobby Shop and craft barn
- ◆Tug of war
- ◆Ping-pong
- ◆Foosball
- ◆Board games

WINTER

- ◆Snow "tubing"
- ◆Ice skating (bring your own skates)
- ◆Basketball
- ◆Volleyball
- ◆Ping-pong
- ◆Foosball
- ◆Board games

NEARBY

- ◆Skiing at Elk Mountain
- ◆Skiing at Montage
- ◆Montage water and alpine slide
- ◆Nature trails and swim area at local parks
- ◆Hay rides
- ◆Steamtown National Historic site
- ◆Coal mine tour
- ◆Red Barons minor league baseball
- ◆Bowling



Meeting Facilities

Chapel:

Seating for 200

Sun Room:

Prayer/Quiet room
Intimate small-group gatherings
Fire place

Auxiliary Chapel:

Seating for 120

Hillside Chapel:

(outdoor amphitheater)
Seating for 100
Campfire ring

Available upon request:

TV/VCR
Overhead projector
Projection screen
Chalkboard

Dining Facilities & Food Service

Dining Room in Lodge:

Seating for 200
Meals served buffet style

Snack:

Served in dining room one evening
Pizza or additional snack available on other evenings at an additional cost

Standard Meal Times:

Breakfast - 8:30 a.m.; Lunch - 12:30 p.m.; Dinner - 5:30 p.m.
Promptness to meals is essential so that food is maintained at the proper temperature.

Doctor-prescribed Diet:

If any guest requires a special, doctor-prescribed diet, please communicate these special needs at least two weeks in advance. If the food service director is unable to accommodate your request, we will notified you.

Camp Rules

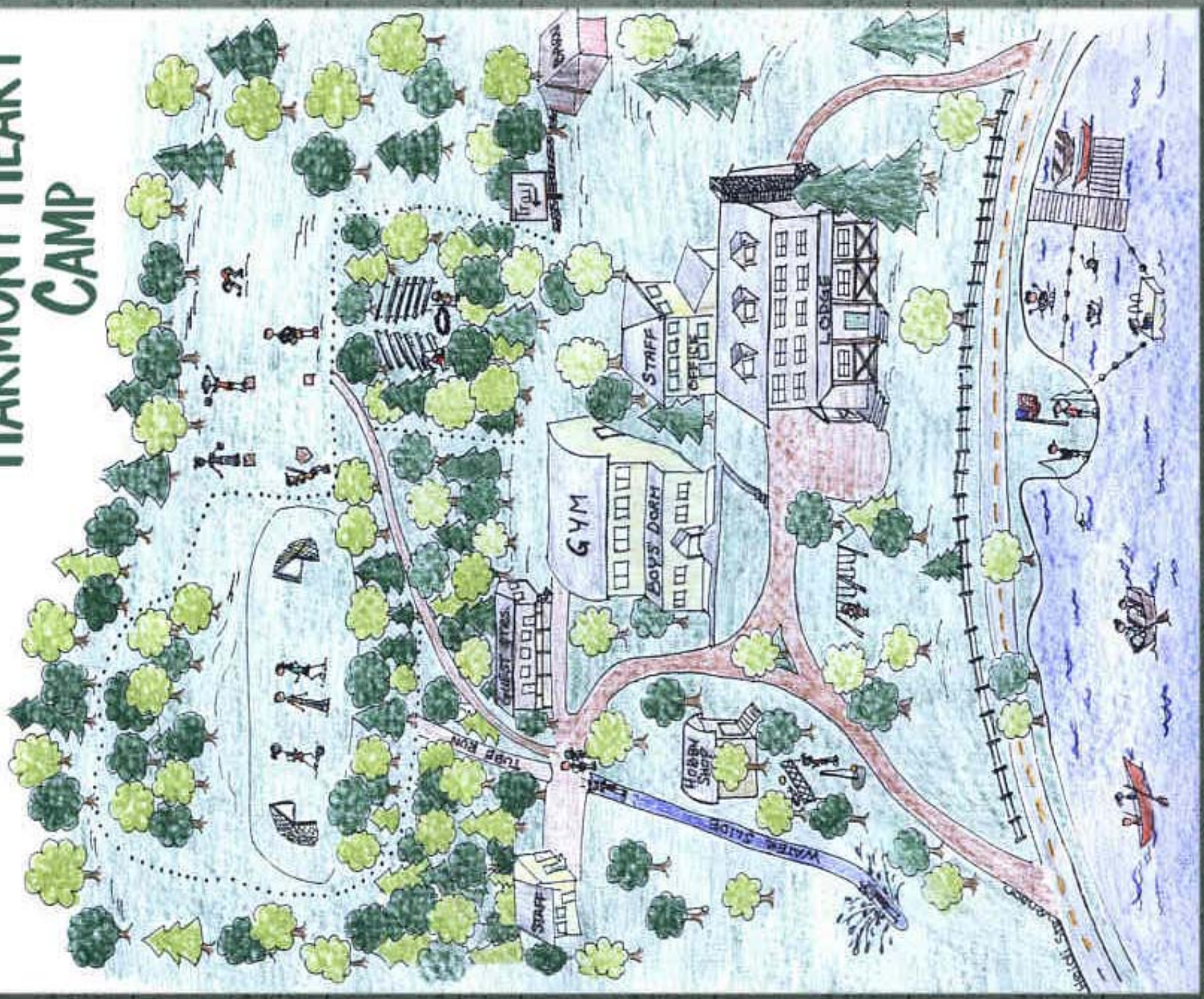
- Absolutely no alcoholic beverages or illegal drugs.
- No smoking in any camp facilities.
- Camp curfew is 12:00 a.m.
- Quiet hours are from 11:00 p.m. to 7:00 a.m.
- Do not play with fire extinguishers. There will be a \$45 charge for any fire extinguisher that has been tampered with.
- No boys in designated girls' rooms.
- No girls in designated boys' rooms.
- Stay off fire escapes except in case of emergency.
- Stay off all roofs.
- Only cross the highway to waterfront under designated supervision.
- Do not go on property around the lake; it is not part of the camp.
- Only use the waterslide when it is operated by HHC staff.
- Do not remove mattresses, furniture or any other camp property from rooms.
- No pets or other animals are allowed.
- For your safety, we recommend that shoes be worn at all times. Swimming and boating are exceptions to this rule.
- No Skateboards



Snow Tubing Guidelines

- Tubing may only be done under the supervision of a designated adult leader. It is this leader's responsibility to see to the safety of the activity. Conditions vary depending upon the weather. Watch for problems with ice build-up, or from the snow getting too thin. These conditions require constant evaluation.
- Only one tube on the run at a time.
- Two people may ride on a tube if the supervising leader feels conditions permit.
- No sleds or snowboards; our insurance only allows for tubes.
- Tube only on the official tube run.
- No man-made jumps may be constructed on the tube run.
- The tubes are stored in the Hobby Shop. The supervising leader will arrange with the HHC host to have it unlocked. All tubes must be put away and the Hobby Shop locked when the tube run is closed.
- Close the tube run if tubing cannot be done safely.

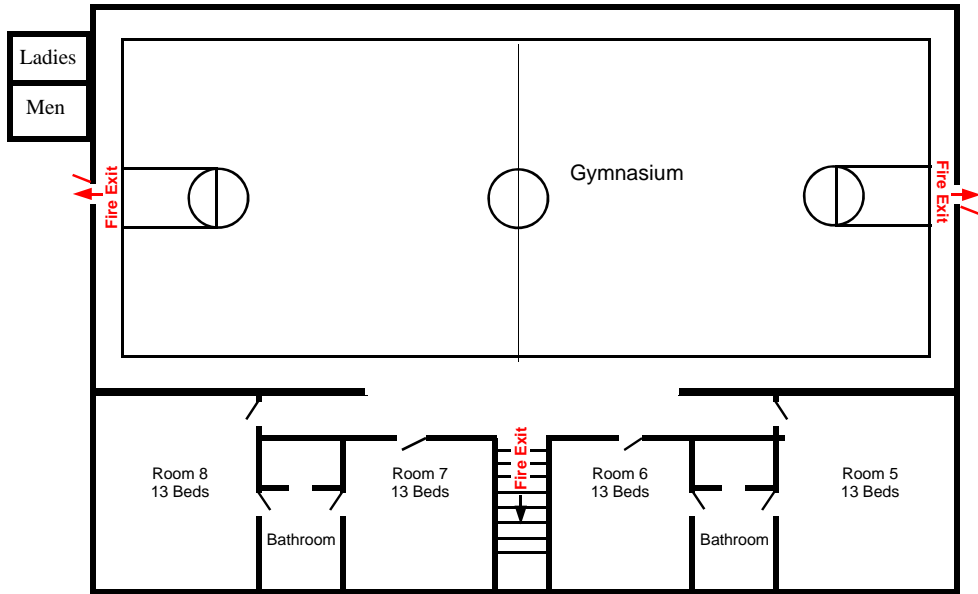
HARMONY HEART CAMP



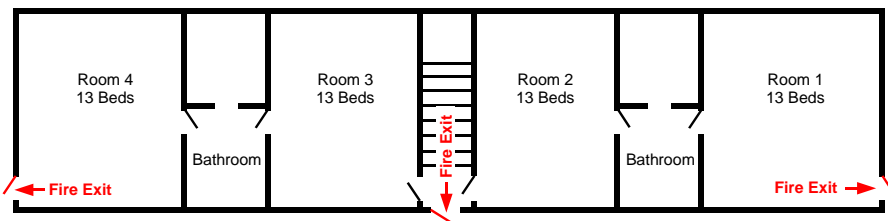
Sleeping Accommodations

Lodge Dormitory: 10 Rooms 2 Bathrooms Sleeps 120 bunk-bed-style	Mobil Home: (for pastor or speaker) Master bedroom (queen-size bed and half bath) Bedroom (double bed) Sofa bed 1 1/2 Bath Sleeps 6 Bedding provided (Mobil home only)
Gym Dormitory: 8 Rooms 4 Bathrooms Sleeps 104 bunk-bed-style	
Note: Bring your own bedding for lodge and gym rooms.	

Harmony Heart Gymnasium

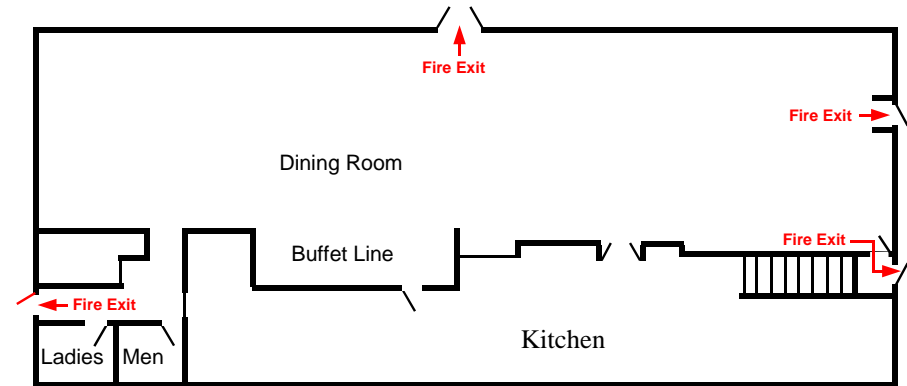


Upper Level Dormitory

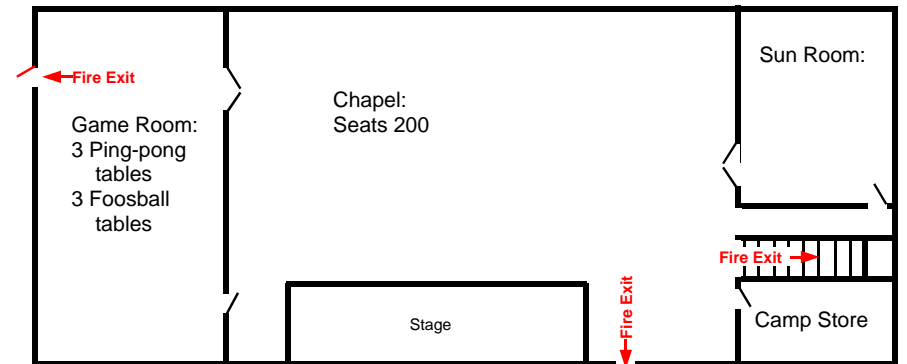


Lower Level Dormitory

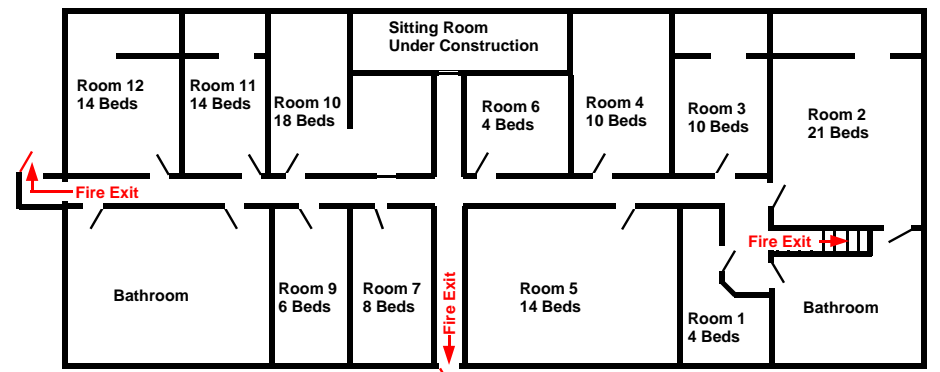
Harmony Heart Lodge



First Floor



Second Floor



Third Floor Dormitory

Statement of Faith

1. There is one living and true God, infinitely perfect in glory, wisdom, holiness, justice, power and love, one in His essence but eternally existing in three persons: God the Father, God the Son and God the Holy Spirit. God sovereignly created the world out of nothing, so that His creation, while wholly dependent upon Him, neither comprises part of God, nor conditions His essential perfection (Genesis 1:2; Matthew 28:19,20).
2. The books which form the canon of the Old and New Testaments are verbally inspired by God, inerrant in the original writings, the only infallible rule of faith and practice (II Timothy 3:16).
3. God created man in His own image, in a state of original righteousness, from which man subsequently fell by a voluntary revolt, and consequently is guilty, inherently corrupt and subject to divine wrath.
4. Jesus Christ, the eternal Son, became man without ceasing to be God by uniting to His divine nature a true human nature in His incarnation, and so continues to be both God and man, in two distinct natures and one person, forever. He was conceived by the Holy Spirit, born of the virgin Mary, exhibited His deity by manifold miracles, fulfilled the requirements of the Law by His sinless life, shed His blood as a vicarious and propitiatory atonement for man's sin, was resurrected from the dead in the same body, now glorified. He ascended into heaven and now intercedes in glory for His redeemed as our great high priest and advocate, and as the Head of the Church and Lord of the individual believer (Matthew 1:20,21; John 1:1-14; Romans 3:21-26; 5:6-11; I Peter 3:18; I John 2:1,2; Luke 24; Acts 1:9; Hebrews 8).
5. The Holy Spirit convicts the world of sin, righteousness and judgment, through the ministry of regeneration and sanctification applies salvation and places believers into the Church, guides and comforts God's children, indwells, directs, gifts and empowers the Church in godly living and service in order to fulfill the great commission, and seals and keeps the believer until Christ returns (John 16:1-33; I Corinthians 12:12; Ephesians 1:13,14).
6. Every man, regardless of race or rank, who receives the Lord Jesus Christ by faith is born into the family of God and receives eternal life. This occurs solely because of the grace of God and has no ground in human merit.
7. The Holy Church is the one institution specifically ordained of God to function in the furthering of the Kingdom until Christ comes again. It consists of all those regenerated by the Spirit of God, in mystical union and communion both with Christ, the head of the Body, and with fellow-believers. Neighborhood congregations are the local manifestation of the Church universal. In obedience to the command of Christ, these congregations preach the word of God, equip God's people for the work of ministry, and administer the Lord's Supper and Baptism.
8. The Lord Jesus Christ will return bodily, visibly and personally to receive His own, to conform believers to His own image and to establish His millennial kingdom. He will judge the quick and the dead and will effect a final separation of the redeemed and the lost, assigning unbelievers to eternal punishment and believers to eternal glory, enjoying conscious fellowship with Him (I Thessalonians 4:13-18; I Corinthians 15:50-58; Revelation 20:4-6).
9. Man's chief end in life is to honor and glorify Almighty God. Personal salvation is a means to this end.

Emergency Medical Care

Each guest group is responsible for bringing a qualified individual to handle medical emergencies for the group. Acceptable qualifications include: Registered Nurse, Emergency Medical Technician, Physician, Physician's Assistant, or Red Cross First Aid/CPR Certification. Your group is responsible for bringing medical supplies. Harmony Heart Camp has basic and limited first aid supplies for minor injuries.

We require you to have a medical release and health form for all minors who will come to Harmony Heart Camp without a parent. These forms are to be held by an adult in your group and kept available for emergency use. If your organization does not have a medical form, we can mail or fax a copy of ours.

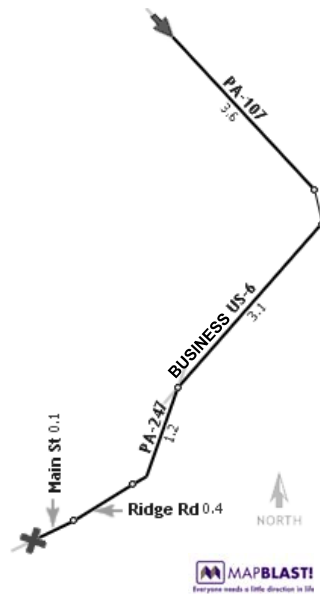
IN THE EVENT OF AN EMERGENCY REQUIRING THE FIRE DEPARTMENT, POLICE, OR AN AMBULANCE: **DIAL 911!**

Your location: Harmony Heart Camp, 1285 Heart Lake Road, Route 107 at Heart Lake, Scott Township, 254-6272

◆ Mid Valley Hospital 570-489-7546
1400 Main Avenue, Peckville
Approx. 15 minutes from HHC

Directions:

1. Turn right out of camp onto PA-107 and go Southeast for 3.6 miles.
2. Turn right on ramp at sign for "Business US-6 W" and go South for 700 feet.
3. Bear right on Business US-6, Roosevelt Hwy and go Southwest for 3.0 miles.
4. Bear left on PA-247 and go South for 1.1 miles.
5. Continue on Ridge Rd and go Southwest for 0.4 miles.
6. At light, turn right onto Hospital Street. The emergency room is on your left and parking is just ahead on your right.



Driving Directions

Harmony Heart Camp is located in Northeastern Pennsylvania about 15 miles north of Scranton and four miles east of I-81.

From the North:

Drive South on I-81 to Exit 202 (PA-107).

Exit to the left (towards Tompkinsville) and drive East on PA-107 for 4 miles. Proceed through the intersection of PA-107 and PA-247 for another 1/8 mile on PA-107.

Look for Harmony Heart Camp on your right, and Heart Lake on the left.

From the West:

Drive East on I-80 to the I-81 North Exit (towards Wilkes-Barre).

Merge onto I-81 North and drive about 40 miles.

Take the US-6 East Exit (exit number 57A) towards Carbondale.

Continue on US-6 about 10 miles.

At US-6 Exit 5, turn left onto PA-107 West.

Continue West on PA-107 about 4.5 miles.

Look for Harmony Heart Camp on your left, and Heart Lake on the right.

From the South:

Drive North on I-476 (from Philadelphia area) or I-81 (from Harrisburg area).

At the junction of I-476 and I-81, proceed North on I-81 to Exit 202.

Exit to the right and head East on PA-107 for 4 miles.

At the intersection of PA-107 and PA-247, proceed another 1/8 mile on PA-107.

Look for Harmony Heart Camp on the right, and Heart Lake on the left.

From the East:

Drive West on I-80 towards the Delaware Water Gap.

Continue through the Water Gap towards I-380/I-84.

Follow the signs for I-380 Scranton.

Exit onto US-6 East Carbondale.

Continue on US-6 East about 10 miles.

At Exit 5, turn left onto PA-107 West.

Continue West on PA-107 about 4.5 miles.

Look for Harmony Heart Camp on your left, and Heart Lake on the right.

